



Opendor

IF-241 Door Fitting

RE-305000xx

A BRAND OF



Table of contents

1	General information	3
1.1	Short description	3
1.2	Scope of delivery	3
1.3	Target group	4
1.4	Intended use	4
1.5	Safety	4
2	Installation and configuration	5
2.1	Installation	5
2.2	Configuration	6
3	Operation	7
3.1	Opening doors	7
3.2	Activating/deactivating the permanently open mode	8
4	Maintenance, cleaning, and disinfection	9
4.1	Maintenance, cleaning, and disinfection	9
4.2	Lubrication	9
4.3	Battery replacement	10
4.4	Opendor ^{card} only: Factory reset (cold boot)	12
4.5	Opendor ^{air} only: Unpair	13
5	Technical specifications	13
6	Disposal	14
7	Declarations of conformity	15
7.1	EU Declaration of Conformity	15
7.2	UK Declaration of Conformity	15

1 General information

1.1 Short description



The electronic door fitting is the ideal solution for cost-effective, uncomplicated and wireless compliance with current security standards for a wide range of applications. IF-241 Door Fitting offers stability through precisely manufactured mechanics and electronics as well as highest data security through the integrated Secure Element.


The key feature of the electronic door fitting from Interflex is that it can be easily integrated into the IF-6040 access control system. Due to the variety of models, IF-241 Door Fitting can be mounted to all standard doors. Two technology variants are available:

- IF-241 Door Fitting^{card} reads the access permissions stored on RFID credentials via proven NetworkOnCard technology.
- IF-241 Door Fitting^{air} reads the digital key on credentials or smartphones via RFID/NFC or Bluetooth® Low Energy technology and evaluates the stored access permissions from the IF-6040 access control system online in real time, or offline in IF-241 Door Fitting.

Together with the IF-4041 Gateway from Interflex and the latest Bluetooth® 5 technology, IF-241 Door Fitting offers all the benefits of a state-of-the-art wireless online system.

1.2 Scope of delivery

- IF-241 Door Fitting
- 95-10462 product info

 Check the completeness and condition of the goods upon receipt and report any damage caused during transport immediately.

Prerequisites

- ✓ Access control system
- ✓ Opendor^{card}: Software *DoorManager* and NFC USB adapter
- ✓ Opendor^{air} IF-4041 Gateway

1.3 Target group

This document is solely intended for *experts* and *people trained in electrical engineering*.

Only perform the actions described in this document if you belong to this target group. Interflex is not liable for any damages caused by improper installation or initial operation.

1.4 Intended use

The devices of the IF-241 Door Fitting series are fitted to designated doors intended for integration into an access control system.

IF-241 Door Fitting is available in different lengths and widths. The dimensions are printed on the packaging. The dimensions for the outer or electronic side and the inner or mechanical side have to be measured separately.

IF-241 Door Fitting is designed for use in dry rooms. The outdoor version can be used if the electronic side may come into contact with moisture.

Any other use is not in accordance with the intended purpose and therefore not permitted. Modifications to the device are not permitted.

1.5 Safety

General

NOTICE

Malfunction due to radio interference

This product may be affected by electromagnetic or magnetic interference.

- ◆ Do not place the product directly next to devices that can cause electromagnetic or magnetic interference, especially not near switching power supplies.

NOTICE

Blocked access due to improper mounting or faulty programming

If you modify the product without authorization, malfunctions may occur and access through a door may be blocked.

- ◆ Use the product only as specified in the documentation.

NOTICE

Damage due to electrostatic discharge (ESD)

Electrical components and modules can be damaged by only slight, hardly noticeable electrostatic discharge (ESD) without this becoming immediately obvious. ESD damages result in malfunctions and even failure of the device.

- ◆ Make sure that effective protective measures against electrostatic discharge are in place when working on the open device.

Batteries

⚠ CAUTION

Risk of explosion due to incorrect battery type

Inserting the wrong type of battery can cause an explosion.

- ◆ Only use the batteries specified in the technical specifications.

NOTICE

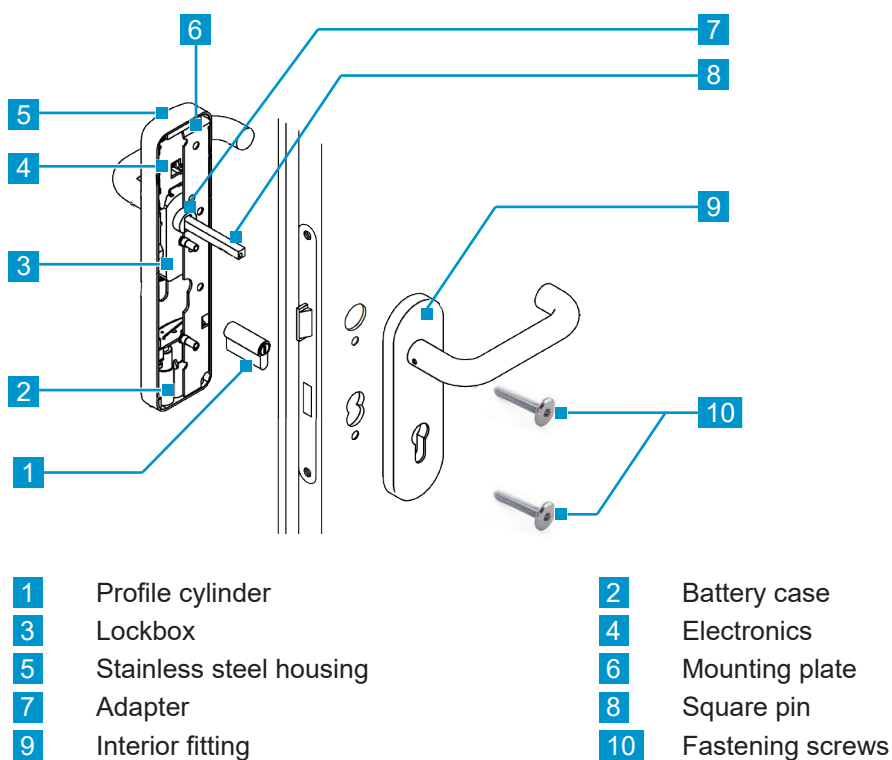
Batteries can be a fire hazard

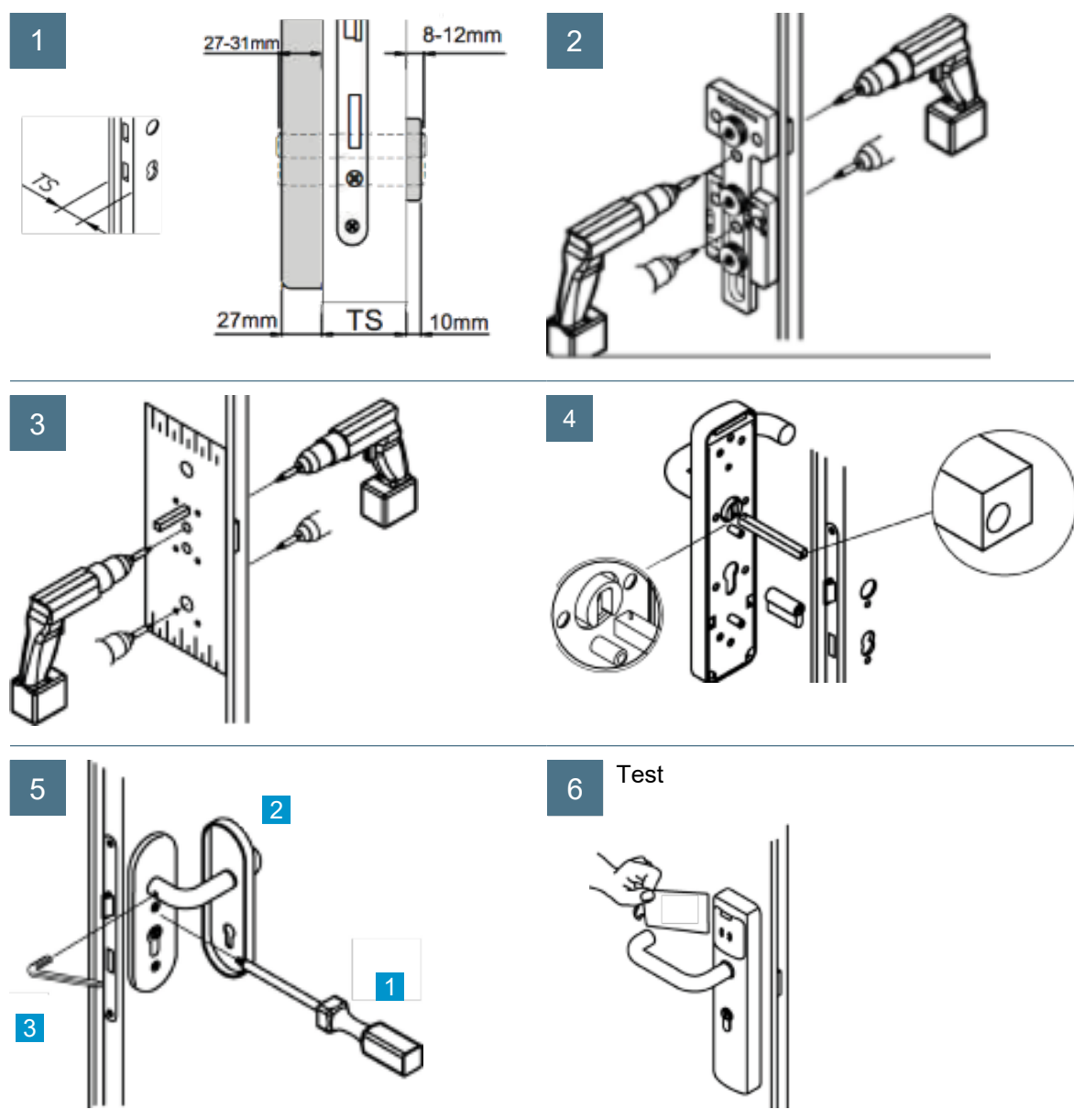
Batteries may pose a fire or burn hazard if handled incorrectly.

- ◆ Do not attempt to charge, open, heat or incinerate the batteries.
- ◆ Do not short circuit the batteries.

2 Installation and configuration

2.1 Installation



To install IF-241 Door Fitting:

2.2 Configuration

The configuration and the management of the components are described in a separate documentation:

Opendor^{card} components

- Configuration with card set: *Interflex Offline Components*
- Configuration with the DoorManager software: in the corresponding technical manual



The software *DoorManager* and the technical manual can be found on our FTP server:

<https://ftpservice.interflex.de>



user: CD-Software
password: 14gBD00ktH96

Opendor^{air} components

- Technical manual for IF-4041 Gateway
- IF-6040 Online help



The technical manual can be found on our website:

<https://interflex.com/de-de/services/wissenszentrum/>



3 Operation

The following sections describe the basics of operation. The technical basics can be found in the document *Offline Components*.







3.1 Opening doors

To open a door that is secured with, hold the credential in the read area of the component.



Depending on the configuration, the lock is automatically locked after the closing time has elapsed or it remains unlocked until a new booking is made.

LEDs and tone indicate the status of the booking:

Visual signal		Audible signal	Description
	Blue		Error reading the credential
	Green	Configurable with door initialization card (<i>sound during motor flag</i>)	Authorized credential
	Red		Reading error
	Red		Credential unauthorized, details can be found in DoorManager under DiagnosticsDiagnostic (Opendor ^{card}) or in IF-6040 under Access > Access management > NoC readers > Information > Last bookings (Opendor ^{air})



If you are using a credential with the *Permanently open* function, only hold the credential in front of the reader unit as long as the LEDs are flashing. Otherwise, the *permanently open* operating mode is activated.

3.2 Activating/deactivating the permanently open mode

IF-241 Door Fitting provides for *Permanently open* mode. In this operating mode, the door can be opened without further bookings.




Activation and deactivation of the permanently open mode requires a credential that has been activated for this function.

Activating the permanently open mode

- ◆ Hold the credential to the reader unit for more than three seconds



The component indicates the *Permanently open On* log file entry:

	3 x green	Standard + Permanently open
	Green	Permanently open

Deactivating the permanently open mode

- ◆ Hold the credential to the reader unit for more than three seconds

The component indicates the *Not permanently open* log file entry:

	3 x green, 1 x red	Standard + Permanently open
	Red	Permanently closed

In case of credentials that **only** have the *Permanently open* function, the activation / deactivation takes place immediately after the reader unit has read the credential.

4 Maintenance, cleaning, and disinfection



Maintenance work and firmware updates put a great load on the batteries. If in doubt, replace the batteries before performing these tasks.

4.1 Maintenance, cleaning, and disinfection

The devices are made of top quality stainless steel. This material is featured by a smooth, mat-finished surface and a high resistance against wear and tear, corrosion and abrasion.

NOTICE

Damage due to improper cleaning of mat stainless steel surfaces

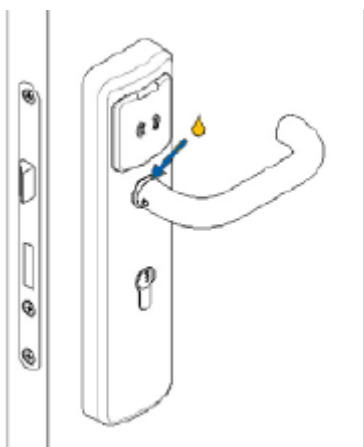
The use of inappropriate cleaning agents may damage the natural passive protective layer of the stainless steel.

- a) Do not use any ferritic auxiliaries such as steel wool, brush or abrasive paper. These materials can damage the protecting passive layer and thus provide a surface for corrosion to occur.
- b) Clean the device regularly using the adequate detergents to prevent impurities or rust depositing on the the surface.
- c) Do not use any aggressive cleaning agents or disinfectants for cleaning.
- d) Apply regularly an additional protective coat on the surface using adequate preservative agents or caring oil.
- e) Only use disinfection agents that are specifically intended for disinfecting sensitive surfaces.

4.2 Lubrication

Oil the door handle bearing at least once a year with resin-free oil, e.g. Sprühöl 88, manufactured by Kontakt Chemie:

1. Pour one or two drops on the door handle







2. Press the door handle repeatedly to let the oil enter the handle guide
3. Clean the door handle

4.3 Battery replacement

When presenting a credential, IF-241 Door Fitting signals that the charging level of the batteries is low (three-level signaling).

Low battery warning levels

Opendor components indicate the low battery level during booking in three stages, to indicate an upcoming battery change.

Description	Visual signal	Audible signal
Stage 1		Red
Stage 2		Red 
Stage 3	 (15x)	Red



We recommend changing the battery at stage 2. If the batteries are empty, LED signaling and bookings are no longer possible.

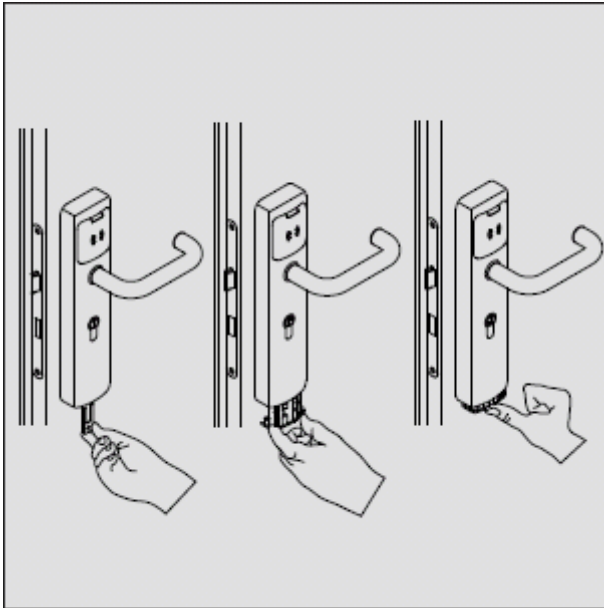
NOTICE

Damage due to improper handling of the batteries

Improper handling of the batteries may damage the components and shorten the battery life.

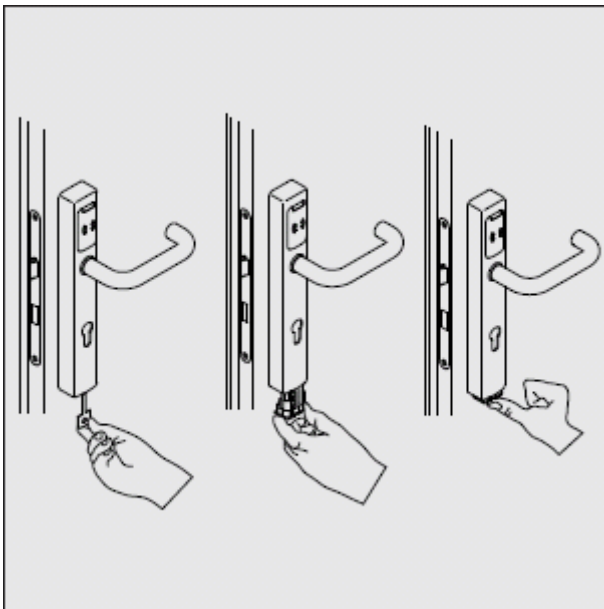
- ◆ Batteries may only be changed by qualified personnel
- ◆ When changing batteries, wear grease-free, clean cloth gloves to prevent fingerprints from contaminating the batteries. Fingerprints on the batteries can significantly reduce the battery life.
- ◆ Only use the installation/battery wrench accessory to change the battery
- ◆ Always replace all batteries when changing batteries
- ◆ Observe the polarity of the batteries

Changing the batteries in door fittings



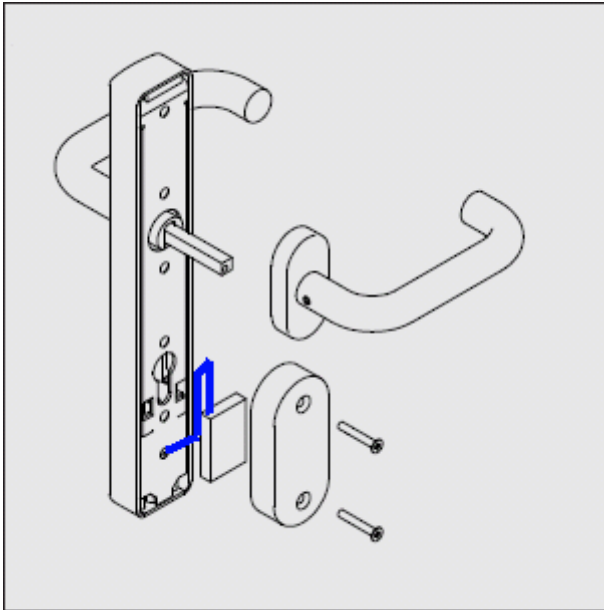
1. Insert the battery replacement tool and remove the battery case
2. Remove old batteries and insert new batteries in accordance with the regulations
3. Push the battery case back in until it clicks into place

Changing the batteries in tubular frame fittings



1. Insert the battery replacement tool and remove the battery case
2. Remove old batteries and insert new batteries in accordance with the regulations
3. Push the battery case back in until it clicks into place

Changing the inside battery



1. Loosen the battery case cover on the inside and open the battery case.
2. Remove old batteries and insert new batteries in accordance with the regulations
3. Close battery case and install cover again



Hold the battery replacement card in front of the reader unit briefly. This lets the IF-241 Door Fitting detect the battery change and signals the battery status, if necessary. If you leave out this step, battery change will not be detected until the next battery measurement takes place. The battery measurement is performed every 24 hours.

4.4 Opendor^{card} only: Factory reset (cold boot)

In the event of an error or a system change, you can reset the Opendor^{card} component to its factory settings with the DoorManager software. This process deletes all internal data such as booking memory, time profiles and door groups are deleted, with the exception of the diagnostic events.

Procedure

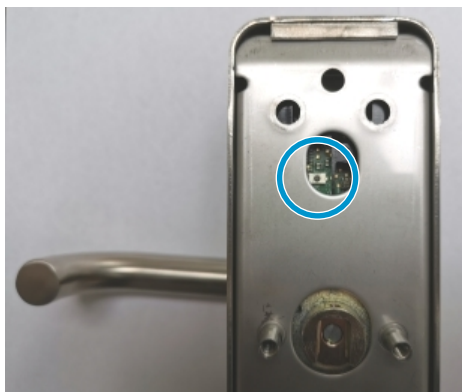
1. Log in to DoorManager with *Facility card* or *Site/Installation* mode
2. Click the **cold start** button

The component indicates that the cold boot was successful:



Purple (approx. 7 sec.), orange (short), red (approx. 1 sec.)

4.5 Opendor^{air} only: Unpair



- ◆ Press the reset button for more than 8 seconds

Component and IF-4041 Gateway are unpaired

At the end of the procedure, the LED lights up in orange for several seconds.

5 Technical specifications

Power supply

Battery	Wide: 3 lithium batteries, type AA 1.5 V Narrow: 3 lithium batteries, type AAA 1.5 V
Battery life at 20°C ambient temperature	Wide: Up to 200.000 actions or up to 12 years at 20 bookings / day Narrow: Up to 80.000 actions or up to 6 years at 10 bookings / day

Equipment

Modes of operation	Online wireless, offline NoC
Interfaces	Bluetooth® 5 to Gateway
Credential reader	RFID: MIFARE® Classic/DESFire LEGIC® advant/prime Smartphone: Bluetooth® Low Energy/NFC
Read range	RFID max. 2 cm, Bluetooth® optional
Frequency range/Transmitting power	RFID (13,56 MHz): 13,553 MHz to 13,567 MHz/ < 42 dBμA/m (dist. 10 m) Bluetooth® 5 (2,4 GHz): 2,400 GHz to 2,4835 GHz/ < 10 mW
Installation type	Indoor and outdoor areas, suitable for fire doors
Signaling	Audible: buzzer Visual: color LED

General data

Degree of protection	IP34, IP55 optional
Ambient temperature	-25 °C to +55 °C
Humidity	Max. 95%, non-condensing
Standards	DIN EN 18273, DIN EN 179, DIN EN 1125
Variants	Door fitting variants: wide, narrow, narrow tubular frames door fitting available in different versions
Dimensions (W x H x D):	Wide: 285 x 65 x 27 mm, narrow: 285 x 42 x 27 mm
Door dimensions	Door thickness: 30 – 200 mm Square spindle: 8 8,5 9 10 mm
Color	Stainless steel

6 Disposal



Once its service life comes to an end, the device must be disposed of properly as electronic waste. You can dispose of the device yourself or return it to the supplier.

Dispose of batteries according to the laws and regulations of your country.

Dispose of batteries at a collection point or insulate the contacts and send the batteries marked *Old batteries for disposal* to the supplier of the product.

7 Declarations of conformity

7.1 EU Declaration of Conformity



Hereby, Interflex declares that the products comply with the EU Directives 2014/53/EU (RED) and 2011/65/EU (RoHS).

The full text of the EU Declaration of Conformity can be found on our website www.interflex.com.

7.2 UK Declaration of Conformity



Hereby, Interflex declares that the products comply with the following UK legislations:

The Restriction of the Use of Certain Hazardous Substances in Electrical and Electronic Equipment Regulations 2012

Radio Equipment Regulations 2017

The full text of the UK Declaration of Conformity can be found on our website www.interflex.com.

The information contained in this manual is to the best of our knowledge accurate and reliable. However, errors or mistakes cannot be completely ruled out. The information herein is therefore subject to change without prior notice. The original manual is in German. Other languages are translations of the original manual.

Version: 05.23