



Reference Story

LTB Leitungsbau GmbH

Higher, further, safer!

Attention is placed on occupational safety and precision

LTB Leitungsbau GmbH is a market leader in Europe when it comes to new construction, maintenance, development and planning of pipelines. Its unique selling points include end-to-end planning, including structural analysis, engineering services, electrical engineering and pipeline design.

Its projects frequently span more than one year while being carried out with precision in Germany and abroad with careful attention attached to protecting employees, the environment and the general public. The in-depth project planning and implementation takes place in compliance with the most stringent security requirements.

Both project-related and organizational processes flow together at the company's headquarters in Radebeul. To ensure that the planning and project processes are smooth and reliable, LTB is investing in the construction of a new corporate headquarters, including a security and access infrastructure.

LTB invests in new headquarters

As part of the construction of the company's new headquarters in Radebeul, Interflex, as existing service provider of LTB, was commissioned to implement a system that would manage access control and record the work times of employees in the future.

In addition to handling the core functions of access control and time recording, the new overall system was also expected to manage the intrusion alarm system and record cafeteria data.

Line of business:

Plant engineering
(energy and information
transmission)

Size of enterprise:

400 employees

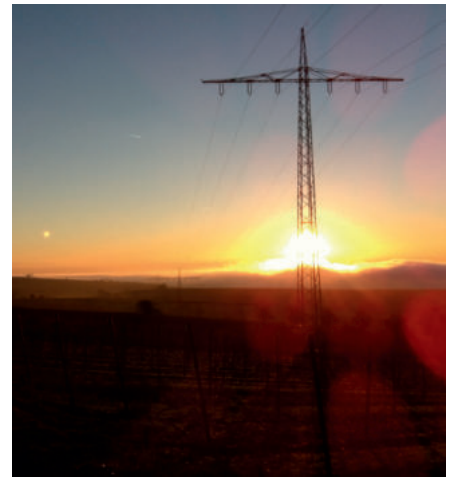
Solution:

Access control, time
recording (software and
hardware)

The customer says:

“With Interflex, we are able to implement our high security requirements in terms of access control and time recording.”

Heinrich Luttmann, Head of Process and
System Management, Public Relations



Right on track

Thanks to Interflex's experience in working together with partners and third parties, LTB was able to put the new system into operation on time for the official opening of the company's new headquarters.

The IF-6040 software handles functions such as granting access rights, controlling access and time recording hardware and logging work times, where are then transferred automatically to SAP's payroll system.

Employee credentials are designed, personalized and created by the IF-6040 system. Employees use the credentials to open doors and make convenient payments in the cafeteria without cash.

The intrusion alarm system is also integrated into the new system. At first, this was accomplished by defining which device secures which area, even if several areas are controlled by the same reader. Now the intrusion detection system can be armed or unlocked directly at the Interflex terminal without being visible on the hardware.

The successful and timely completion of the project is due to all of those involved in the project at Interflex and LTB and their close and trust-based cooperation.



LTB carries out mega projects while complying with strict security requirements. The wide-ranging scope of work includes efficient communication channels and well-established processes at the company's headquarters in Radebeul, where access security and time recording are controlled using Interflex's system.

